

# TERRI AND DON WEBER

Prudential Sussex Realty - Terri & Don Weber



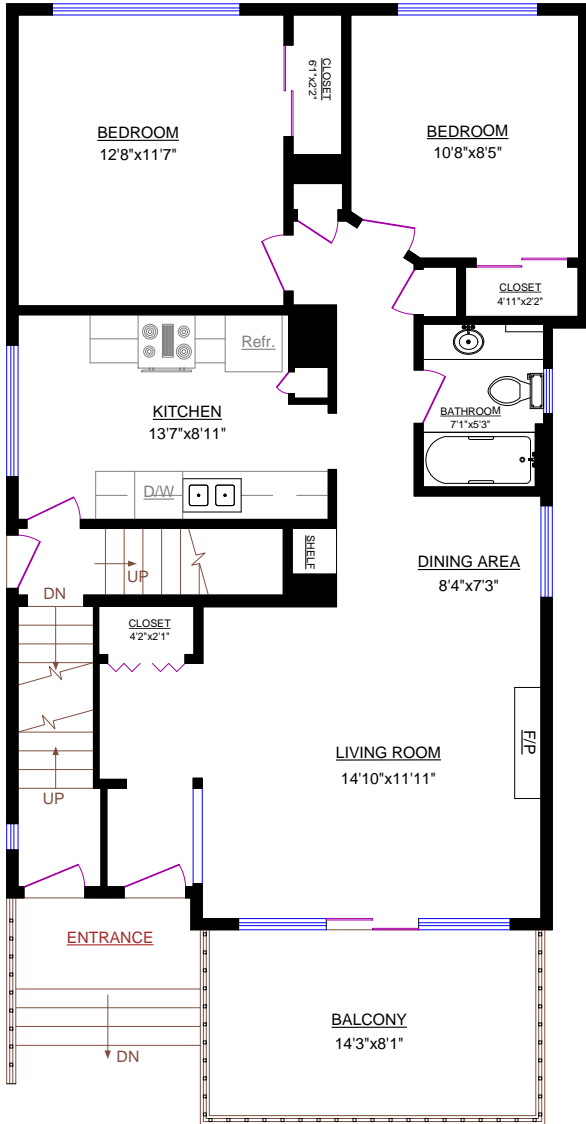
2397 Marine Drive  
West Vancouver, BC V7V 1K9  
(604) 925-2911  
www.terriweber.com



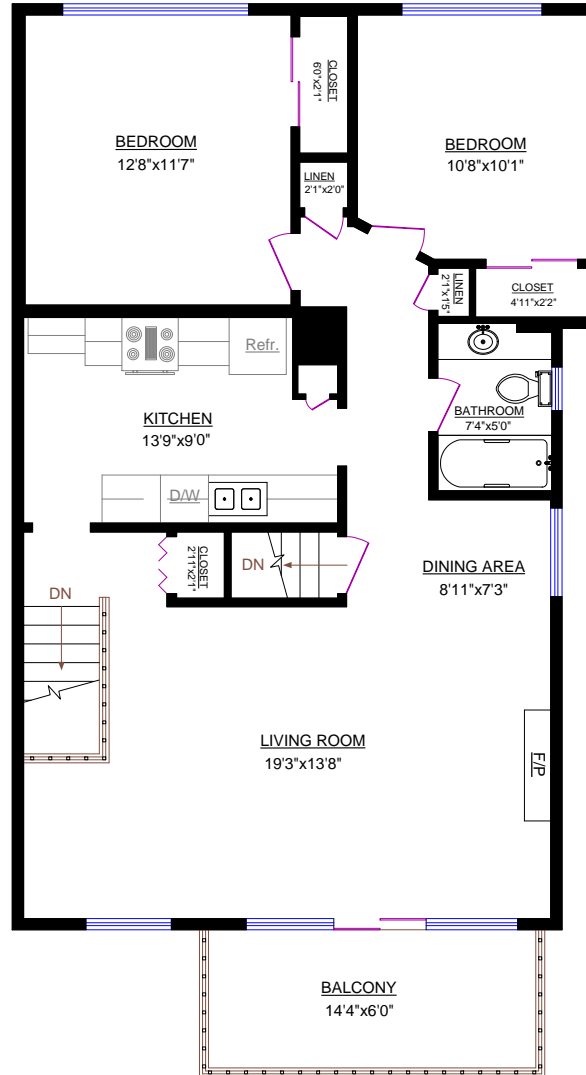
# 212-214 W 5th STREET, NORTH VANCOUVER

Main Floor: 980 sq.ft.  
Upper Level: 991 sq.ft.  
Lower Level: 893 sq.ft.  
TOTAL FINISHED: 2,864 sq.ft.  
TOTAL UNFINISHED: 87 sq.ft.  
GRAND TOTAL: 2,951 sq.ft.

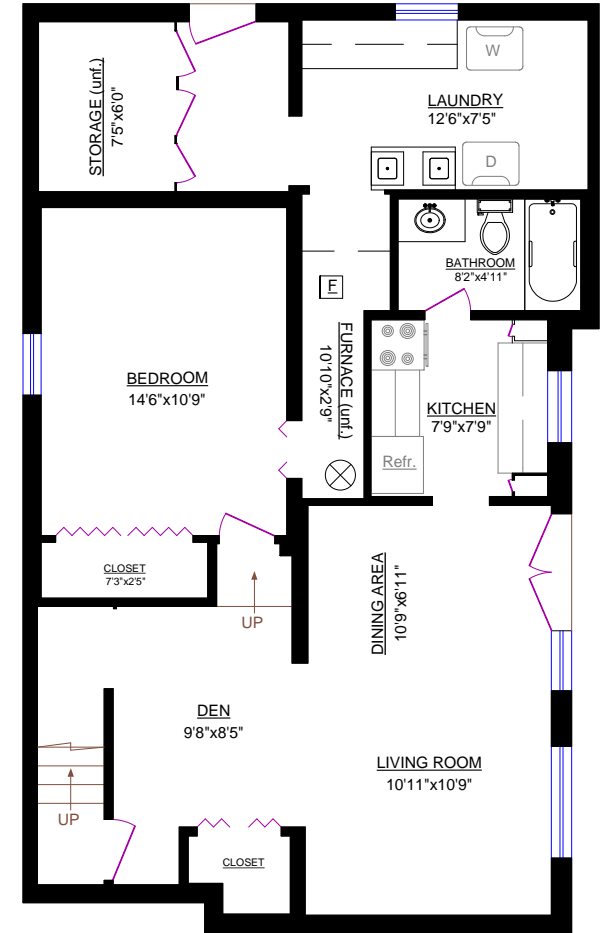
OTHER AREAS:  
Balcony (Main): 116 sq.ft.  
Balcony (Upper): 86 sq.ft.



**MAIN FLOOR**



**UPPER LEVEL**



**LOWER LEVEL**

